

## **Bering Sea Integrated Ecosystem Research Project: Format for Semiannual Progress Reports**

**Please Note:** Semiannual Progress Reports are due on October 1 or April 1 (whichever comes first) after the contract start date, and then every semester thereafter until the contract is completed. If the first report comes due before substantial progress has been made, please just note that in your initial report. If progress reports are delinquent, current and subsequent invoices will not be paid until programmatic requirements are met. Note that this report will be posted on the Board's BSIERP web site and is what Board members, the Science and Advisory Panels, other researchers and the public will see as representational of your research and its quality.

Email electronic copy to tvanpelt@nprb.org using **this subject line format:**  
**BSIERP Project XXX Progress Report**

If you have questions, please contact Thomas Van Pelt at (907) 644-6715 or tvanpelt@nprb.org

**[Please be concise; aim for 2-5 pages depending on the scope of your project]**

**Project #: B90**

**Title: Fish surface trawl survey acoustics**

**Principal Investigator(s) and Recipient Organization(s):**

PI: Dr. Edward Farley (ed.farley@noaa.gov)  
Alaska Fisheries Science Center  
Auke Bay Laboratories, Ted Stevens Marine Research Institute  
17105 Pt. Lena Loop Road  
Juneau, AK 99801

**Contract Period and Amount of Funding:**

**1 February 2008 to 31 December 2012**  
**Match Only**

**Report Period:**

**1 April 2009 through 30 Sept 2009**

**Report Date:**

**30 Sept 2009**

**Lead Author of Report:**

**Ed Farley**

**Proposed timeline and milestones within report period:**

- Complete 2009 Fall survey in the southeastern and northeastern Bering Sea

**Project Summary:** Provide platform and surface and mid-water trawls to collect commercially important fish species and forage fish species (walleye pollock, Pacific cod, herring, sand lance, capelin) to determine their relative abundance, distribution, size, diet, and energetic status prior to winter. Hypothesis 1b,c

**Progress Summary:**

- The R/V OSCAR DYSON sampled 50 surface (Figure 1) and 31 mid-water stations in the southeastern (Sept 1 to 30, 2009) Bering Sea from 161W to 173W.

## **Bering Sea Integrated Ecosystem Research Project: Format for Semiannual Progress Reports**

- The AFSC chartered the F/V Epic Explorer to sample the northeastern Bering Sea (Aug 24 to Sept 15, 2009). The survey included 50 surface trawl (Figure 2) and 7 mid-water station. The number of mid-water stations was low due to the fact that the surface trawl was sampling most of the water column during much of the survey (depths < 40 m).
- The BASIS survey ended Sept 30, 2009. Ed Farley and Sandy Parker-Stetter will provide details on cpue and distribution of capelin, age 0 pollock, and age 0 P. cod at the annual PI meeting in Girdwood, AK, Oct 13-15, 2009.

### **Lessons learned and project adjustments:**

**Integration activity:** Fish catch and stomach content data from BASIS 2009 were collected during the survey and will be distributed to collaborators within the FISH group once these data are compiled. Fish samples for energetics were provided to Ron Heintz and catch data associated with acoustic target strength were provided to John Horne.

**Education and Outreach:** None so far.

**Next year's Work plan (not part of the 5 page target length):** At the end of your progress report, please update your work plan for the coming year. In particular, add detail for 2010. Contact Mike Sigler if you have any questions in regards to your work plan. Follow this template:

**BSIERP B90, Fish surface trawl survey acoustics,** Ed Farley, ed.farley@noaa.gov and 907-789-6085

### **2009-2012 Tasks, Assignments, Timeline**

<i>What</i>	<i>Who</i>	<i>Start ( 2009)</i>	<i>Other key dates</i>
Plan 2010 Fall survey, including liaison with BSIERP data group	<b>Farley, Sigler, Clary, Horne, Heintz, Aydin</b>	January 2010	Complete plan during May
2010 Survey; DY 2010	<b>Farley, Eisner, Horne, Parker-Stetter</b>	Tentative dates: August 15 to September 30, 2010	

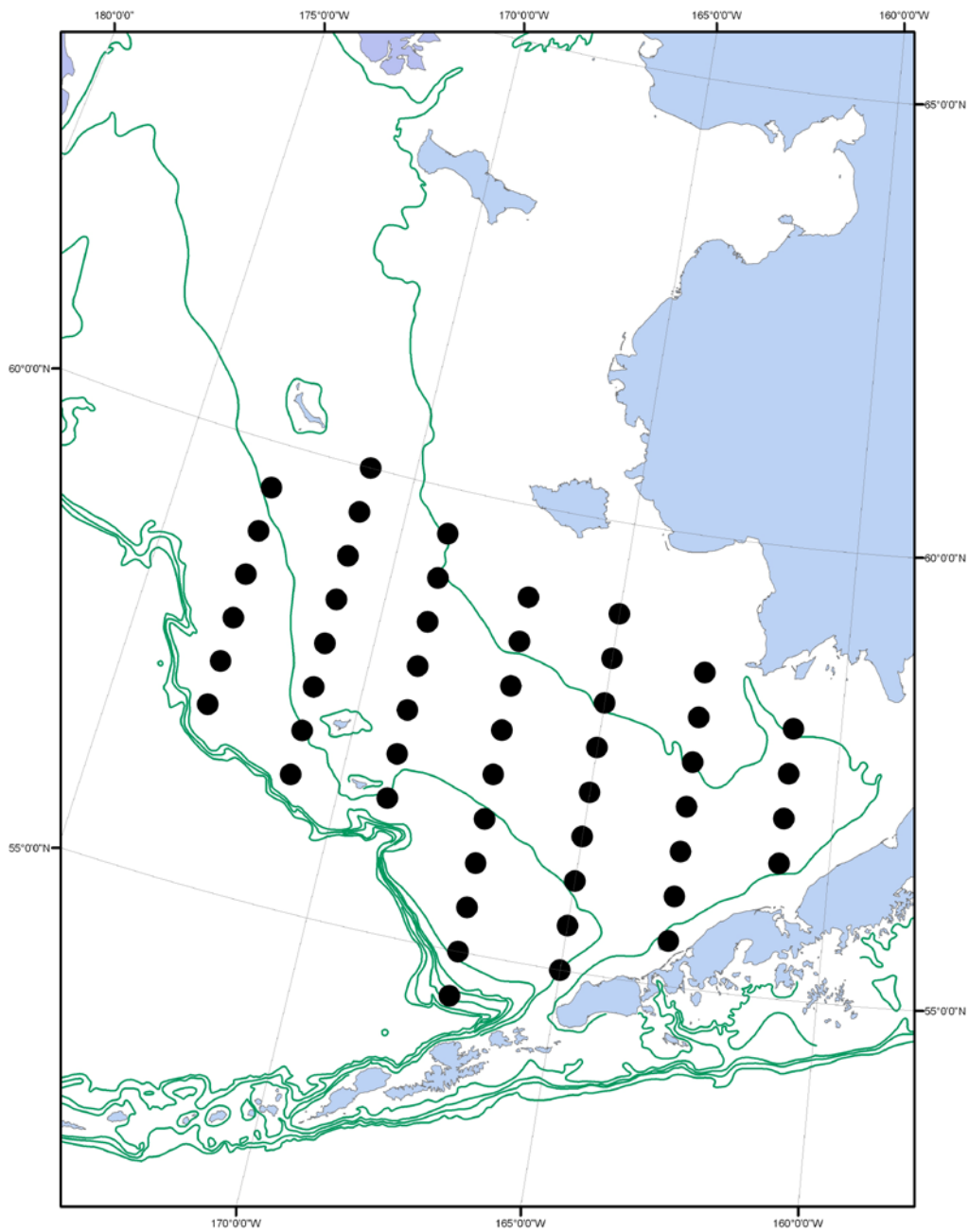


Figure 1. Surface trawl stations sampled during the September 1 – 30, 2009 BASIS research cruise on the R/V OSCAR DYSON.

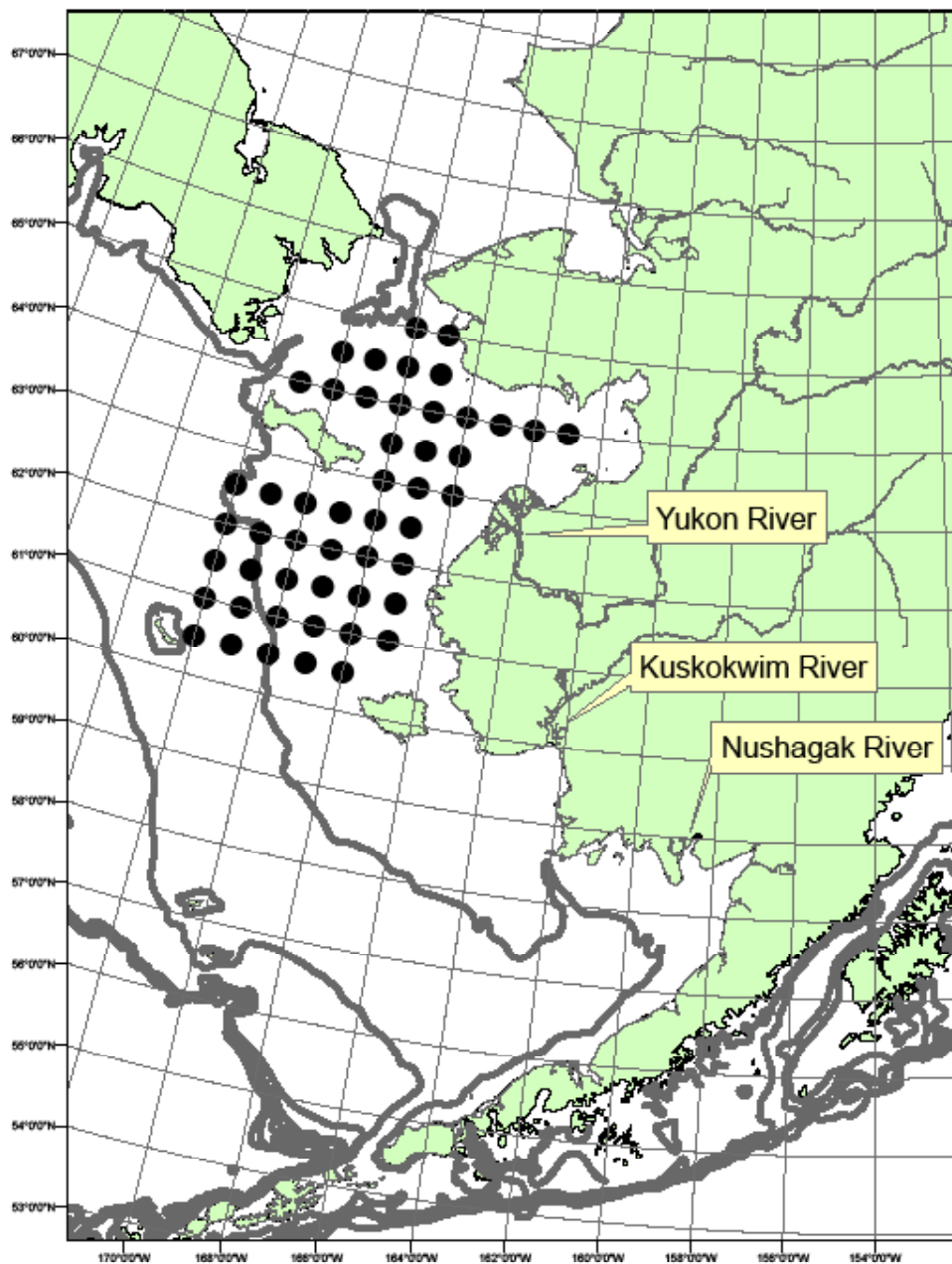


Figure 2. Surface trawl stations sampled during the August 24 to September 15, 2009 BASIS research cruise on the F/V *EPIC EXPLORER*.